



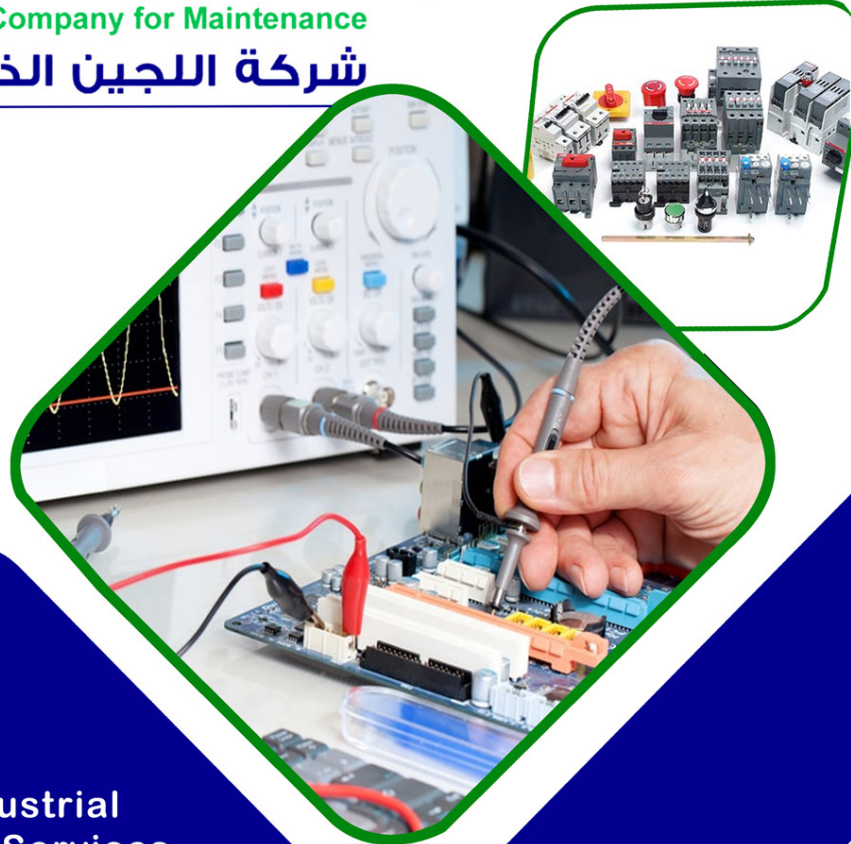
# LCM

Lujain Company For Maintenance

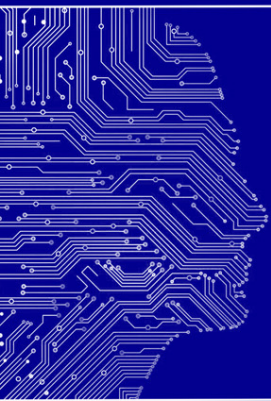
## You're In Good Hands



Al Lujain Al Dakia Company for Maintenance  
شركة اللجين الذكية للصيانة



LCM Your Partner in Efficiency Industrial  
Electronics Repair & Maintenance Services  
One Stop for All Your Industrial Maintenance Needs



**LIFT**  
Servicing & Maintenance



## REVOLUTIONIZING INDUSTRIAL ELECTRONIC REPAIR

[www.lcmksa.com](http://www.lcmksa.com)

+966 57 164 0225

[info@lcmksa.com](mailto:info@lcmksa.com)



Introduction At LCM, we specialize in extending the life of your industrial electronics equipment. Our expert technicians provide top-notch repair, refurbishment, and maintenance services to get your operations up and running smoothly. We understand the importance of maintaining your industrial equipment to ensure optimal performance, safety, and productivity.

Repair & Refurbishment Services - Component-level repair and replacement - Diagnostic and troubleshooting expertise - Quick turnaround times to minimize downtime - Cost-effective solutions to reduce waste and save resources

# INDUSTRIAL ELECTRONICS REPAIR

» Industrial PCB

» Inverter

» PLC

» AC / Dc Drives

» Soft Starter

» Servo Motor

» Power Supply

» Test Instruments

» VFD / VSD

» HMI / Operator Panel

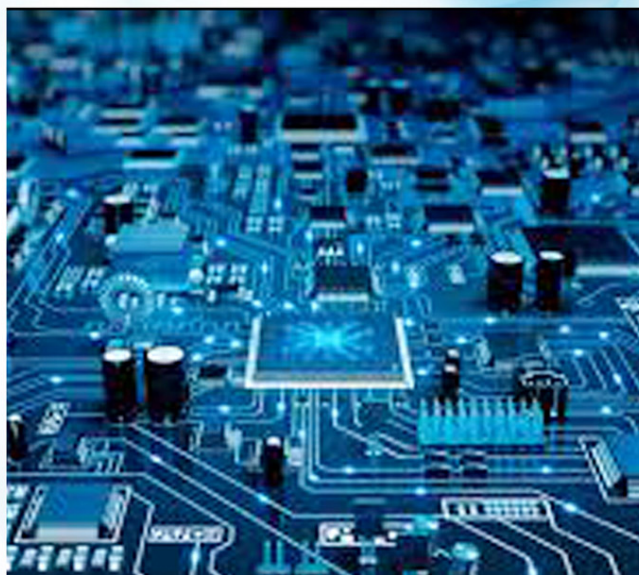
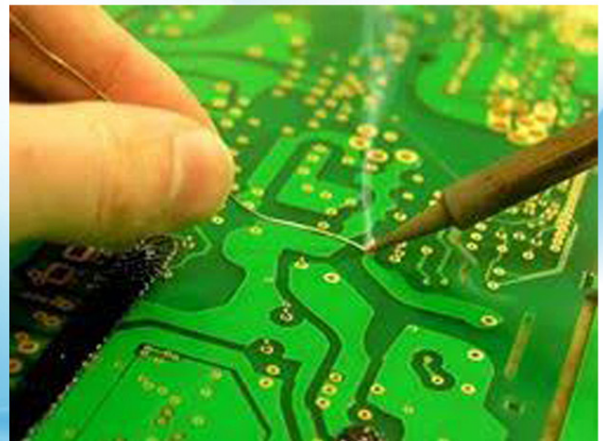
» Encoder

» DCS System

» Sensor

» Controllers

» Industrial UPS





## **BRANDS WE REPAIR**

**SIEMENS**

***Danfoss***

**ABB**

**Honeywell**

  
**EMERSON**

**Schneider**  
Electric



**HITACHI**  
Inspire the Next

**TOSHIBA**

  
**BAUMULLER**

 **Rockwell Automation**

  
**mitsubishi**

**KUKA**

 **DELTA**

  
**Telemecanique**

**OMRON**

 **PHOENIX CONTACT**



 **Allen-Bradley**  
by ROCKWELL AUTOMATION

**rexroth**  
A Bosch Company

**FANUC**

**FLUKE®**

 **YASKAWA**  
MOTOMAN ROBOTICS

**SEW**  
**EURODRIVE**

 **CONTROL TECHNIQUES**

  
**Ingersoll Rand**

  
**Fuji Electric**



**KEB**





**INDUSTRIAL PCB**



**AC / DC DRIVES**



**SOFT STARTER**



**INVERTER**



**VFD**  
(VARIABLE  
FREQUENCY DRIVE)



**AC / DC  
SERVO MOTOR**



**ENCODER**



**PLC**



**COMMUNICATION  
CARD**



**IO MODULES**



**HMI HUMAN  
MACHINE INTERFACE**



**INDUSTRIAL  
MONITOR**



**INDUSTRIAL  
DISPLAY**



**INDUSTRIAL  
TOUCH SCREEN**



**INDUSTRIAL  
OPERATOR PANEL**



**INDUSTRIAL  
CPU**



**POWER SUPPLY**



**MOTOR  
CONTROLS**



**MOTOR  
PROTECTION  
RELAY**



**STEPPER  
MOTOR  
CONTROLLER**



**DCS SYSTEM**



**VALVE  
CONTROLLER**



**ACTUATOR  
CONTROLLER**



**CNC  
CONTROLLER**



**TEST  
INSTRUMENT**





Industrial Low Current Devices



Industrial-Plugs-Sockets



## Safety-Tools



# Elevator Maintenance Services

**LCM Lift Maintenance - Keeping You Moving** Reliable lift maintenance is crucial for smooth operations and safety. At LCM, our expert technicians provide comprehensive maintenance services to ensure your lifts run efficiently and effectively. **Benefits of Working with LCM** - Reduced equipment downtime and increased productivity - Extended equipment lifespan and cost savings - Expertise in various industrial electronics systems - Personalized service and support







Ultrasound Equipment



Patient monitoring  
and Critical Care



Anesthetic  
Workstation



Surgical Diathermy



ECG Machine



X-Ray Machine



Supply of Medical Equipment  
& Consumables



Cost-effective Repair &  
Maintenance



Board Level Repair of  
Biomedical Equipments



Annual Maintenance  
Contracts

**BIO**  
**MEDICAL EQUIPMENT**  
**REPAIR & SERVICING**

Al Lujain Al Dakia Company for Maintenance  
شركة اللجين الذكية للصيانة



[www.lcmksa.com](http://www.lcmksa.com)

Don't let equipment failures hold you back.

Contact Information Get in touch with us to learn more about our services and schedule a consultation

**Al Lujain Company For Maintenance**

CR: 4030560122

VAT : 312334631100003

Phone : + 966 57 164 0225

Email: [info@lcmksa.com](mailto:info@lcmksa.com)